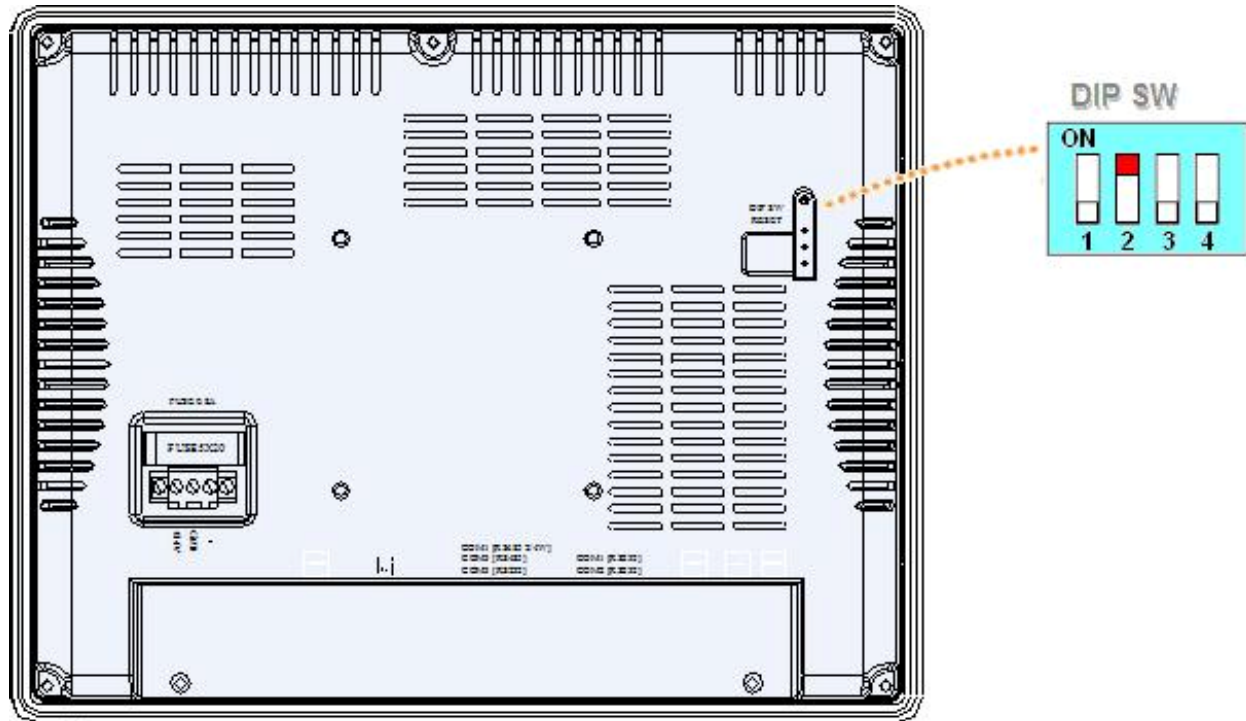


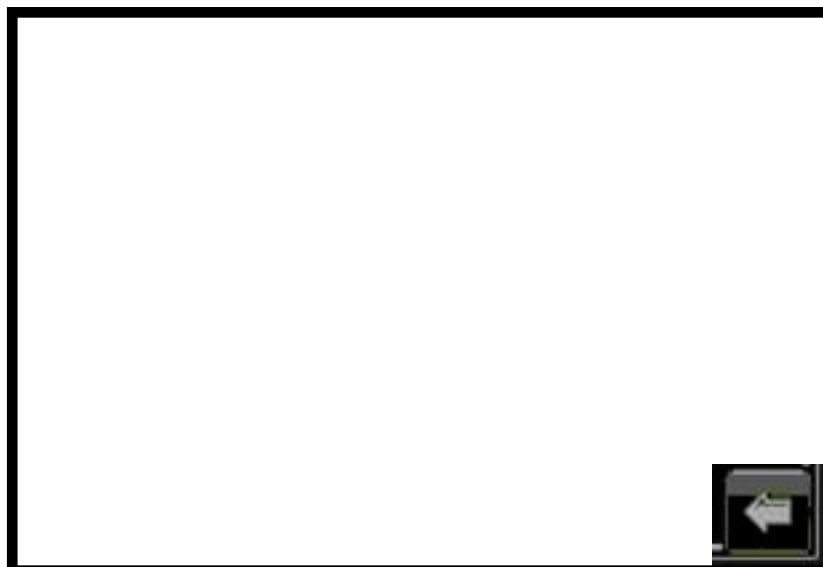
MAPLE SYSTEMS - Data & Time change

From the back of the display change the Dip switch # 2 to down

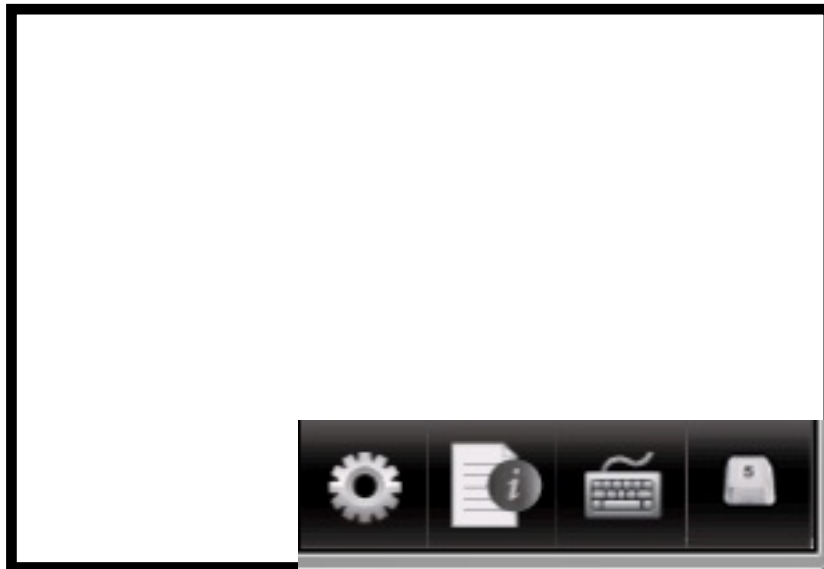


Cycle power

Once display is powered back up a small black arrow will appear in the lower right corner.



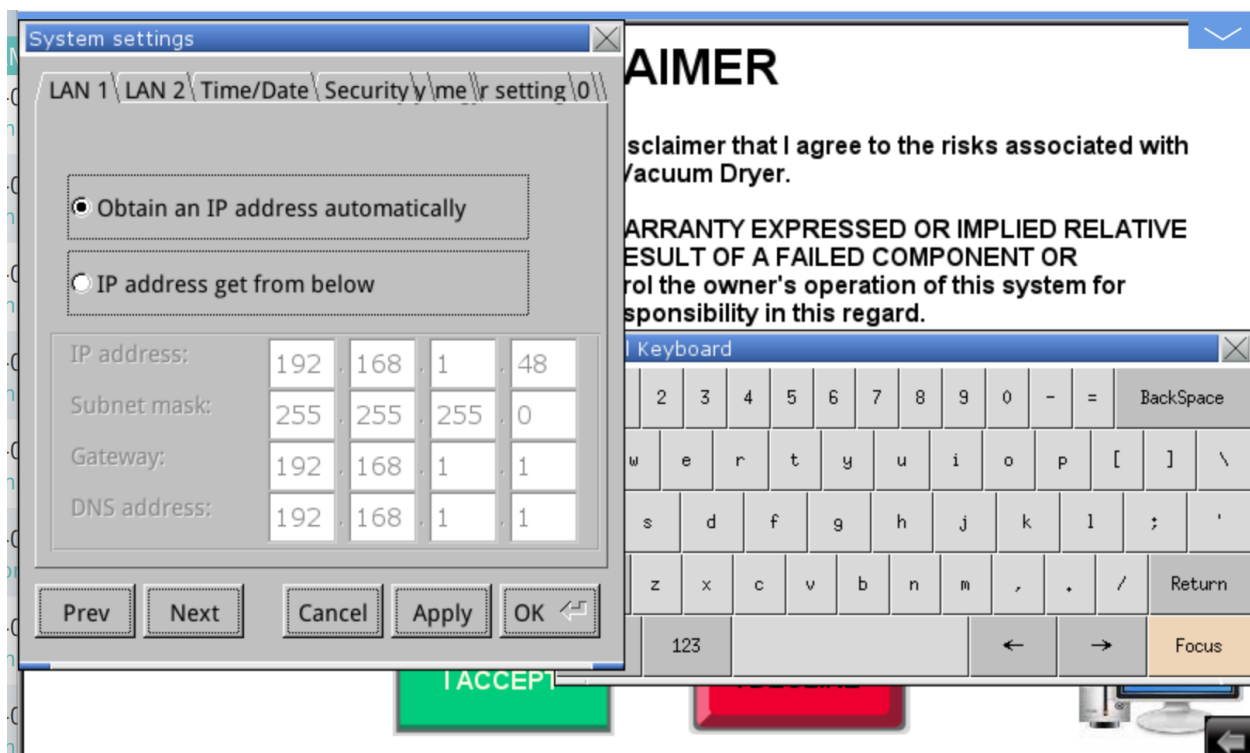
Pressing the arrow with reveal more icons including a gear tooth far left.



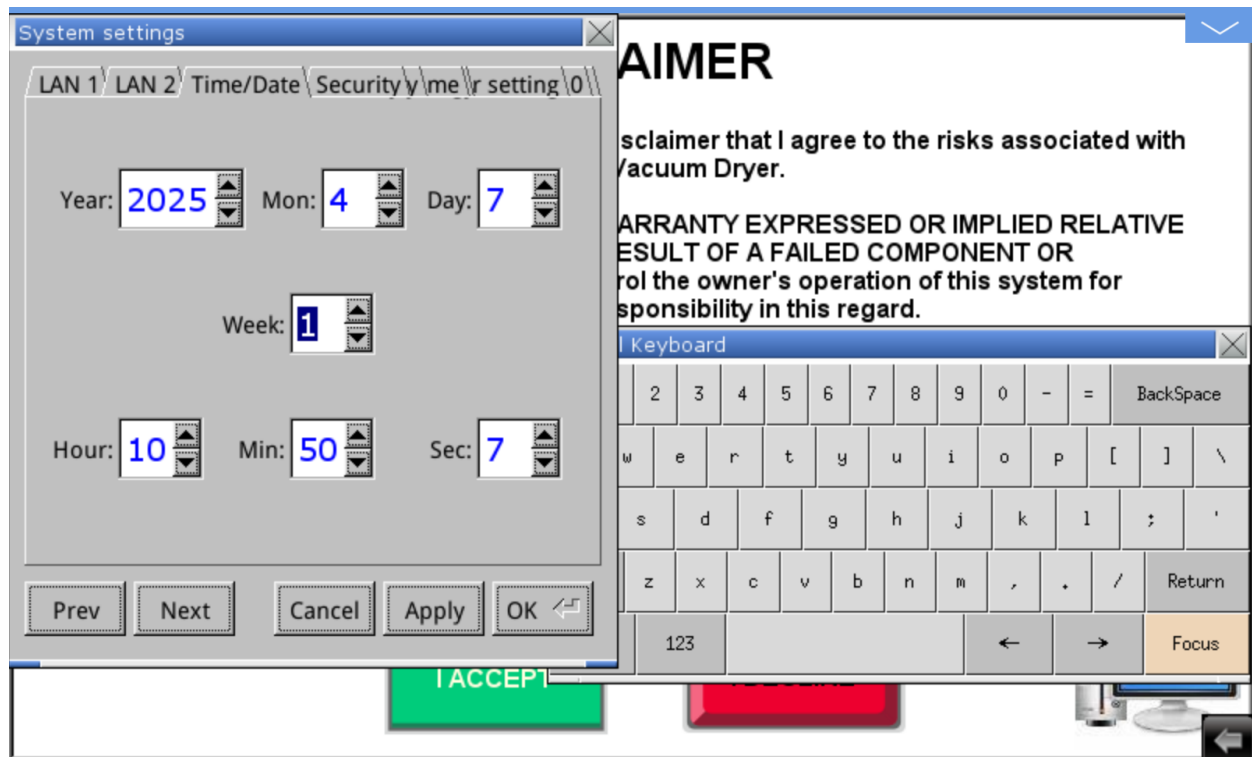
Press the gear tooth icon and enter the password

PASSWORD = 111111

Press the return/enter key on the keyboard then press the OK or LOGIN button. The System Setting window will appear.



Press the Time/Date tab and change as required.



*FOR EASY ACCESS SECURITY UPDATE CHANGE
THE MONTH TO 7 (July) AND THE YEAR TO 2022